

# ARTIFICIAL REEF

## Site Summary



Department of  
Environmental  
Conservation



| Reef                                   | Location                  | Action & Acreage               |
|--|---------------------------|--------------------------------|
| Atlantic Beach                         | Atlantic Ocean – Offshore | No change - 413 Acres          |
| Fire Island Reef                       | Atlantic Ocean - Inshore  | Expanded from 744 to 850 Acres |
| Hempstead Reef                         | Atlantic Ocean – Offshore | Expanded from 744 to 850 Acres |
| Huntington/Oyster Bay Reef             | Long Island Sound         | New 50 Acre Reef               |
| Kismet Reef                            | Great South Bay           | No change – 10 Acres           |
| Matinecock Reef                        | Long Island Sound         | No change - 41 Acres           |
| McAllister Grounds (Fishing Line) Reef | Atlantic Ocean - Inshore  | Expanded from 115 to 425 Acres |
| Mattituck Reef                         | Long Island Sound         | New 50 Acre Reef               |
| Moriches Reef                          | Atlantic Ocean - Inshore  | Expanded from 14 to 850 Acres* |
| Port Jefferson/Mt. Sinai Reef          | Long Island Sound         | New 50 Acre Reef               |
| Rockaway Reef                          | Atlantic Ocean - Inshore  | Expanded from 413 to 635 Acres |
| Shinnecock Reef                        | Atlantic Ocean - Inshore  | Expanded from 35 to 850 Acres* |
| Sixteen Fathom                         | Atlantic Ocean – Offshore | New 850 Acre Reef              |
| Smithtown Reef                         | Long Island Sound         | Expanded from 3 to 31 Acres    |
| Twelve Mile Reef                       | Atlantic Ocean – Offshore | No change - 850 Acres          |
| Yellowbar (Fisherman) Reef             | Great South Bay           | No change - 7 Acres            |

\*See below for further information.

## Taking Public Comment into Consideration

Expansions of the Moriches and Shinnecock Artificial Reef sites received the most comments and were of greatest concern to the commercial fishing industry. For this reason, DEC focused efforts on minimizing impacts to the commercial industry on these two artificial reefs. For information on all artificial reefs, including site boundaries, water depth, and site details, visit: <https://www.dec.ny.gov/outdoor/71702.html>

In order to minimize impacts to commercial fishing on Moriches and Shinnecock Reefs, deployment areas (i.e. locations where materials will initially be placed in the future) were designated within the permitted boundaries of these two reefs (Figure 1 and 2). The deployment areas were drawn based on the information DEC received from the commercial fishing industry.

### Moriches Reef

The current designated deployment area on Moriches Reef would provide 345 acres to deploy materials on (Figure 1). The historical reef size was 14 acres prior to the expansion and is now permitted for 850 acres. The main concerns raised by the commercial industry about the Moriches Reef expansion include the importance of not expanding the reef further north, not expanding as far south as permitted, and keeping the reef orientation parallel to shore. The deployment area on Moriches Reef takes all these suggestions into account.

### Shinnecock Reef

The current designated deployment area on Shinnecock Reef would provide 353 acres to deploy materials on (Figure 2). The original reef size was 35 acres prior to the expansion and is now permitted for 850 acres. The main concerns raised by the commercial industry about the Shinnecock Reef expansion included impacts to fish pot gear, in addition to maintaining an area to trawl south of the reef. Current New York regulations prohibit the use of fish pots within 500 feet of artificial reefs in New York waters. To minimize the impact to fish pot gear, 500-foot buffers were drawn around the pot locations provided to us. This allowed us to keep the deployment area from impacting 26 of the 30 fish pot locations provided. In addition, the configuration of the deployment area maintains a trawling lane south of the reef.

# Moriches Reef

Moriches Reef Permitted Boundary - 850 acres, DEC designated Moriches Reef Deployment Area – 345 acres

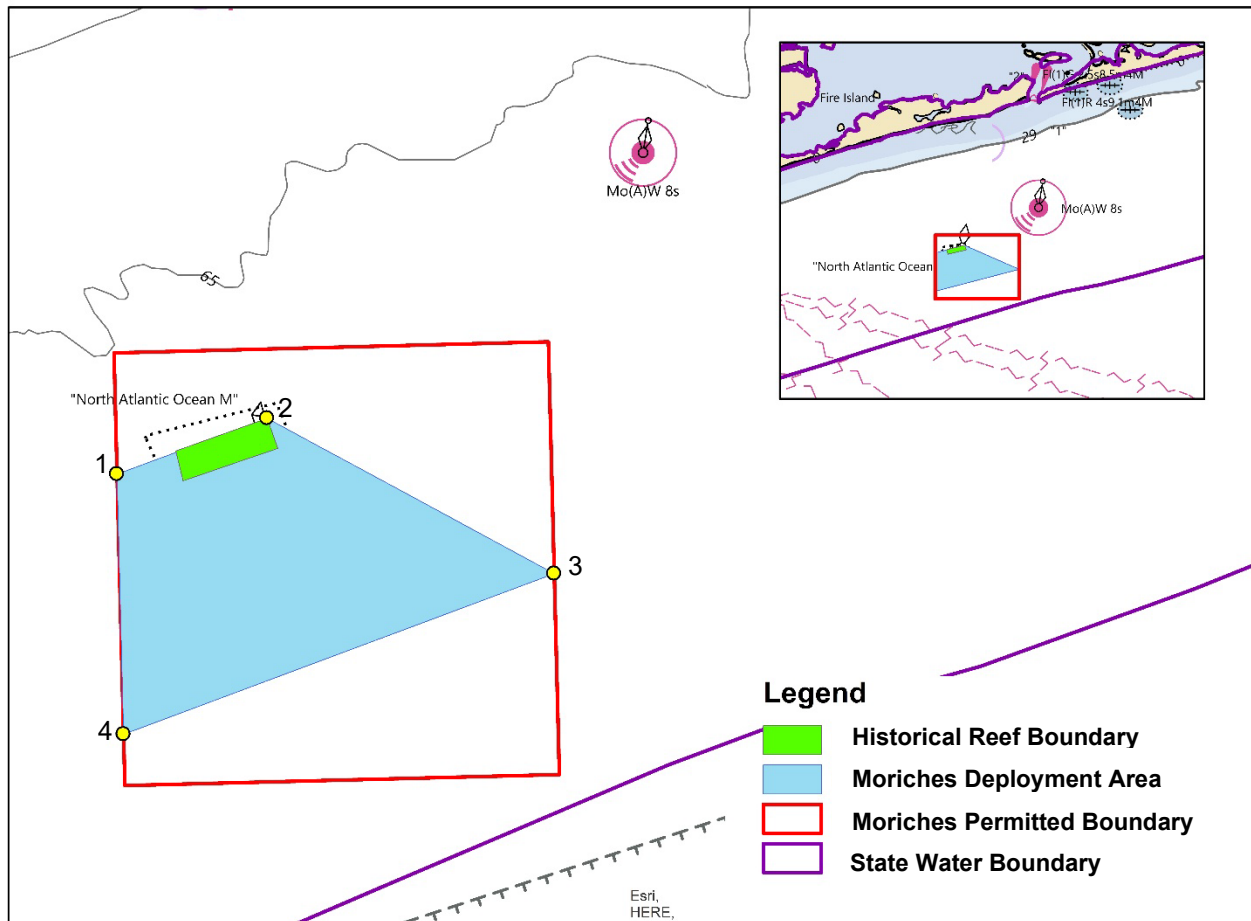
## Deployment Area Coordinates

| Point | Latitude (Decimal Degrees) | Longitude (Decimal Degrees) | Latitude (Degrees Decimal Minutes) | Longitude (Degrees Decimal Minutes) |
|-------|----------------------------|-----------------------------|------------------------------------|-------------------------------------|
| 1     | 40.723656                  | -72.780333                  | 40° 43.4194                        | 72° 46.82                           |
| 2     | 40.725667                  | -72.772667                  | 40° 43.54                          | 72° 46.36                           |
| 3     | 40.719404                  | -72.758333                  | 40° 43.1642                        | 72° 45.5                            |
| 4     | 40.713641                  | -72.780333                  | 40° 42.8185                        | 72° 46.82                           |

## Deployment Area Compass Headings

| Line               | Compass Heading | Direction             |
|--------------------|-----------------|-----------------------|
| Point 1 to Point 2 | 69.5 / 249.5    | Northeast / Southwest |
| Point 2 to Point 3 | 118.4 / 298.4   | Southeast / Northwest |
| Point 3 to Point 4 | 249.5 / 69.5    | Southwest / Northeast |
| Point 4 to Point 1 | 358.5 / 178.5   | North/ South          |

Figure 1. Moriches Reef- Permitted Boundary, Deployment Area, and Historical Boundary



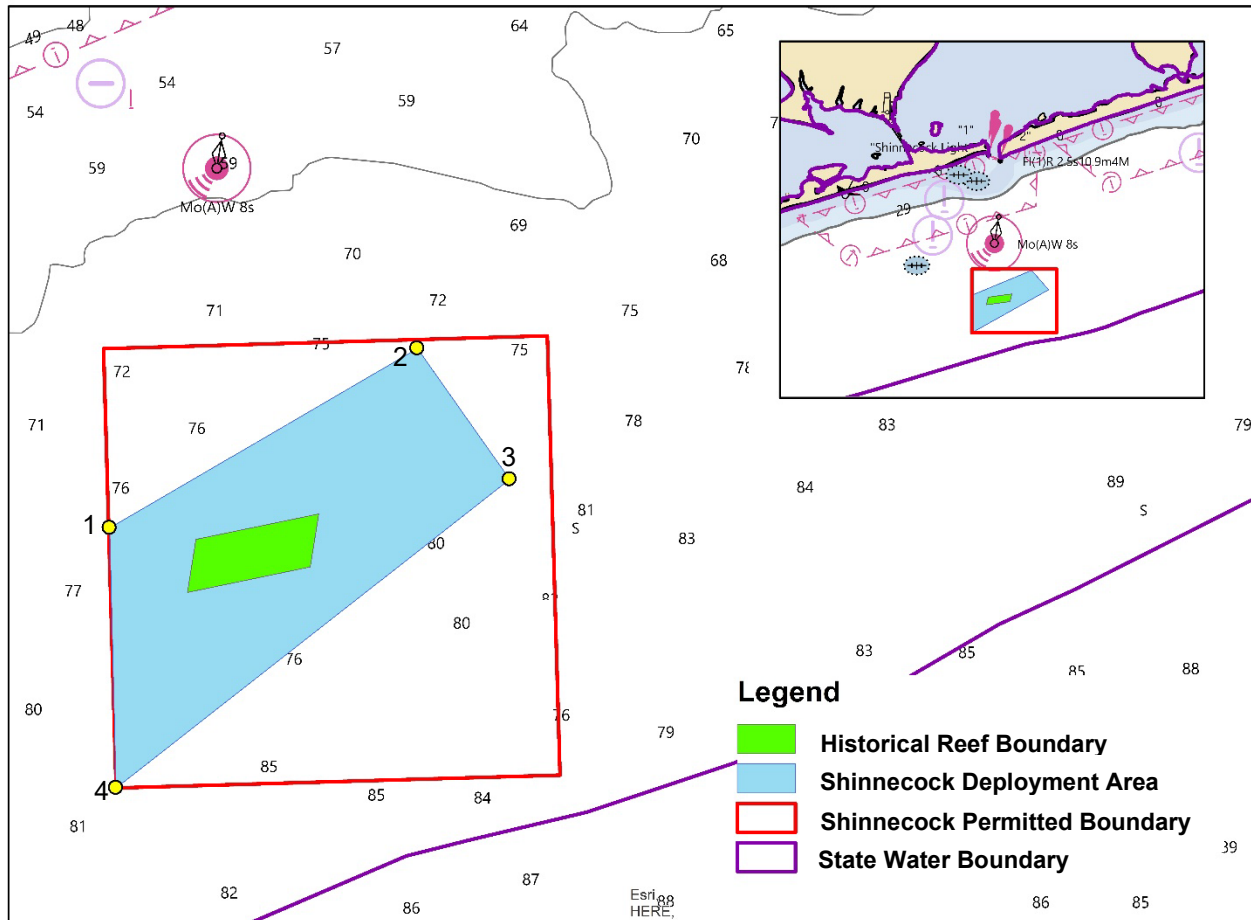
# Shinnecock Reef

Shinnecock Reef Permitted Boundary - 850 acres, DEC designated Shinnecock Reef Deployment Area – 353 acres

| Point | Latitude (Decimal Degrees) | Longitude (Decimal Degrees) | Latitude (Degrees Decimal Minutes) | Longitude (Degrees Decimal Minutes) |
|-------|----------------------------|-----------------------------|------------------------------------|-------------------------------------|
| 1     | 40.803195                  | -72.482116                  | 40° 48.1917                        | 72° 28.927                          |
| 2     | 40.809663                  | -72.466506                  | 40° 48.5798                        | 72° 27.9904                         |
| 3     | 40.8046                    | -72.462083                  | 40° 48.276                         | 72° 27.725                          |
| 4     | 40.793333                  | -72.482167                  | 40° 47.6                           | 72° 28.93                           |

| Line               | Compass Heading | Direction             |
|--------------------|-----------------|-----------------------|
| Point 1 to Point 2 | 59.7 / 239.7    | Northeast / Southwest |
| Point 2 to Point 3 | 144.8 / 324.8   | Southeast / Northwest |
| Point 3 to Point 4 | 231.9 / 51.9    | Southwest / Northeast |
| Point 4 to Point 1 | 358.5 / 178.5   | North / South         |

Figure 2. Shinnecock Reef- Permitted Boundary, Deployment Area, and Historical Boundary



## Future Reef Building Plans

- To further limit impacts to mobile gear commercial fishers, DEC will deploy new materials within 500 feet of the historical reef boundaries on Moriches and Shinnecock reefs. Deployments that follow will stay within 500 feet of those materials, slowly building out the reef footprint.
- It is important to understand that filling in a reef with materials takes a long time. The speed at which reef building occurs is dependent on several factors including funding, material availability, material proximity to the reef site, reef site characteristics, and reef permit conditions.
- On average, each reef may receive between one to ten deployments over a 5-to-20-year period. On some occasions, reefs may receive numerous deployments within a year. It's estimated to take over 100 years to build out all reef sites, including the expansions and new sites.
- Until 6 CRR-NY 40.6(g) is updated, fish pots will continue to be allowed within the deployment areas on Moriches and Shinnecock reefs. New regulations will eventually propose restricting fish pots within 500 feet of the deployment areas on Moriches and Shinnecock reefs but will allow fish pots to continue fishing 500 feet outside of the deployment area but still within the permitted reef boundaries.
- The designated deployment areas on Moriches and Shinnecock reefs maintain lanes for mobile commercial gears to continue fishing the area uninterrupted.

## Stay Informed

### Stay Up to Date with Announcements from DEC

DEC offers more than 100 newsletter topics, including **saltwater fishing & boating** and **shellfishing** that provide artificial reef updates, fisheries meetings information, upcoming regulation changes, and much more!

Sign up for DEC Delivers: <https://www.dec.ny.gov/public/65855.html>

### New York State Commercial Fishing Permit Holders

**Marine license and permit holders receive notifications from the DEC Division of Marine Resources by email or text message.** Commercial fishing permit holders are encouraged to update their email address or cellphone numbers with the Marine Permit Office to receive the most up to date information about artificial reef deployments, notices regarding trip limit changes, upcoming meetings, reporting reminders, and more, instead of postcard notifications.

Sign up by emailing: [VTR@dec.ny.gov](mailto:VTR@dec.ny.gov)

